



GEDA Explosion Proof Duty Rack & Pinion Elevators

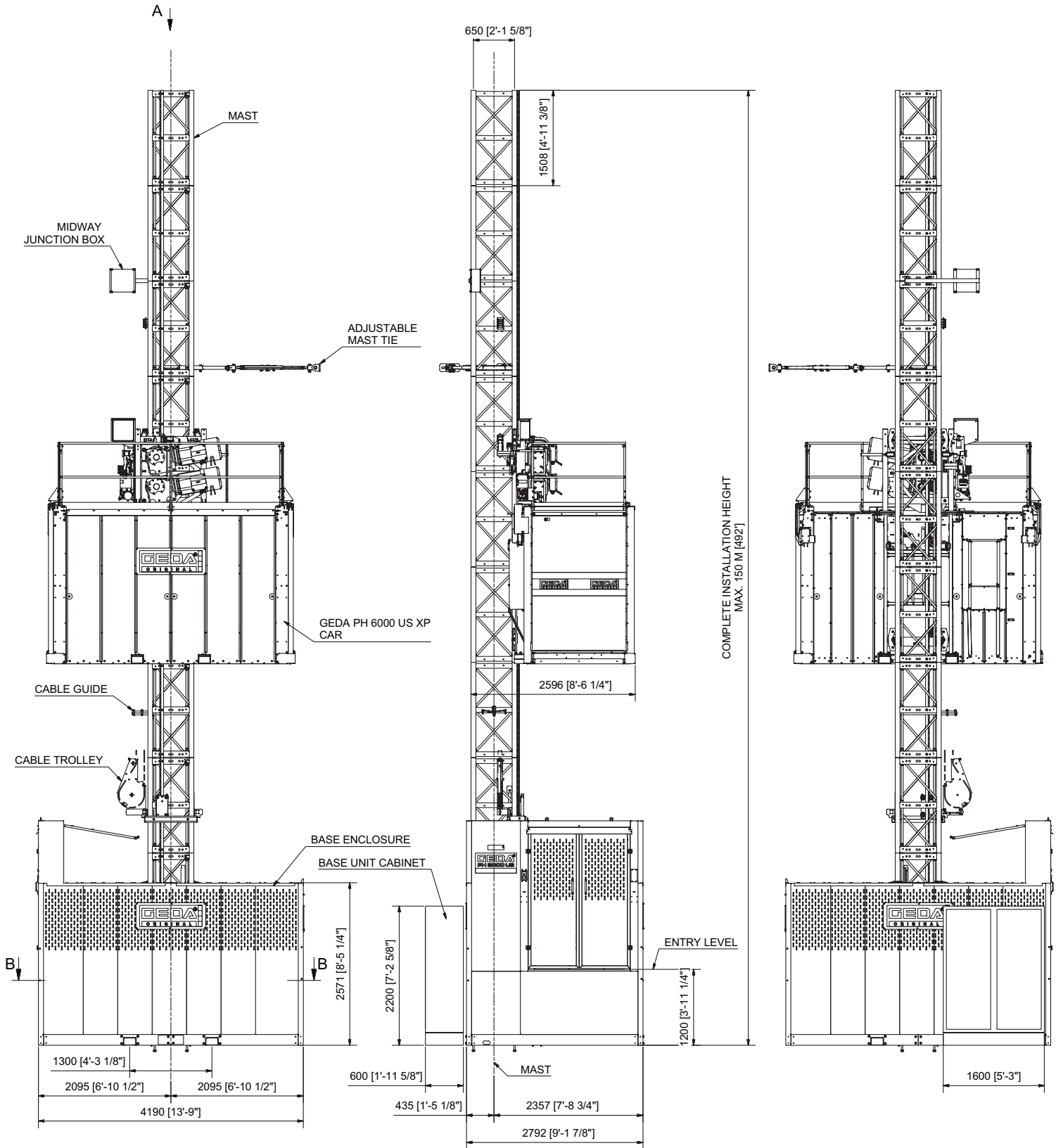


To protect the livelihood of your employees and company assets in all types of vertical transport, GEDA provides premium explosion proof duty rack & pinion elevators. During design and manufacturing, we take special precautions to meet hazardous classified locations, zones, and atmospheres where concentrations of flammable gases, vapors or dusts occur.

Safety being top priority, GEDA's engineers work closely with International recognized certification and consulting companies to design an elevator system that meets or exceeds the hazardous classification requirements for safety, and deliver a high performance elevator system.

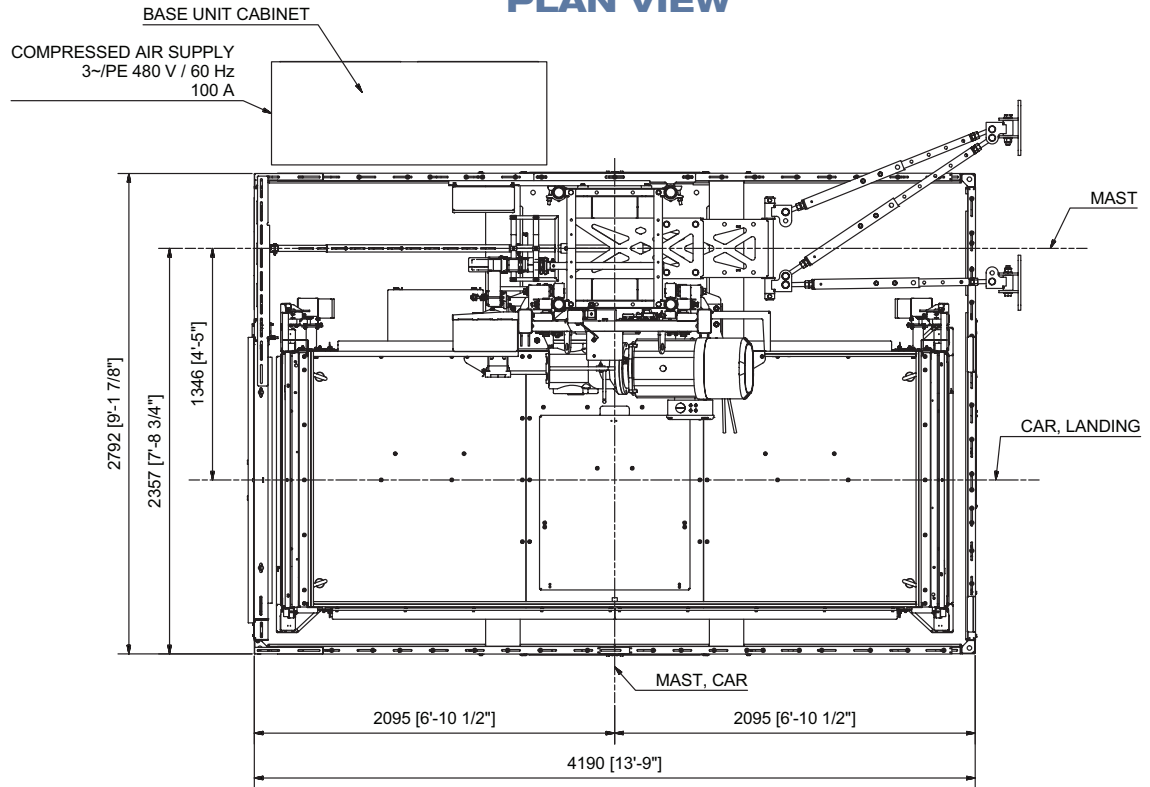
No business can excel with unreliable or unsafe equipment — or by failing to take care of its employees and materials.

Trusted by gas, refining and petrochemical facilities worldwide, GEDA USA's state-of-the-art industrial explosion proof elevators are ideal for both temporary and permanent installations. GEDA adheres to all applicable industry codes, and products can be certified to meet ANSI 10.4, ANSI A17.1, EN-81, NFPA 70, NEC EX, UL 508 A and ATEX. In addition, GEDA is ISO9001:2008 compliant and is a proud member of the German Engineering Federation (VDMA).

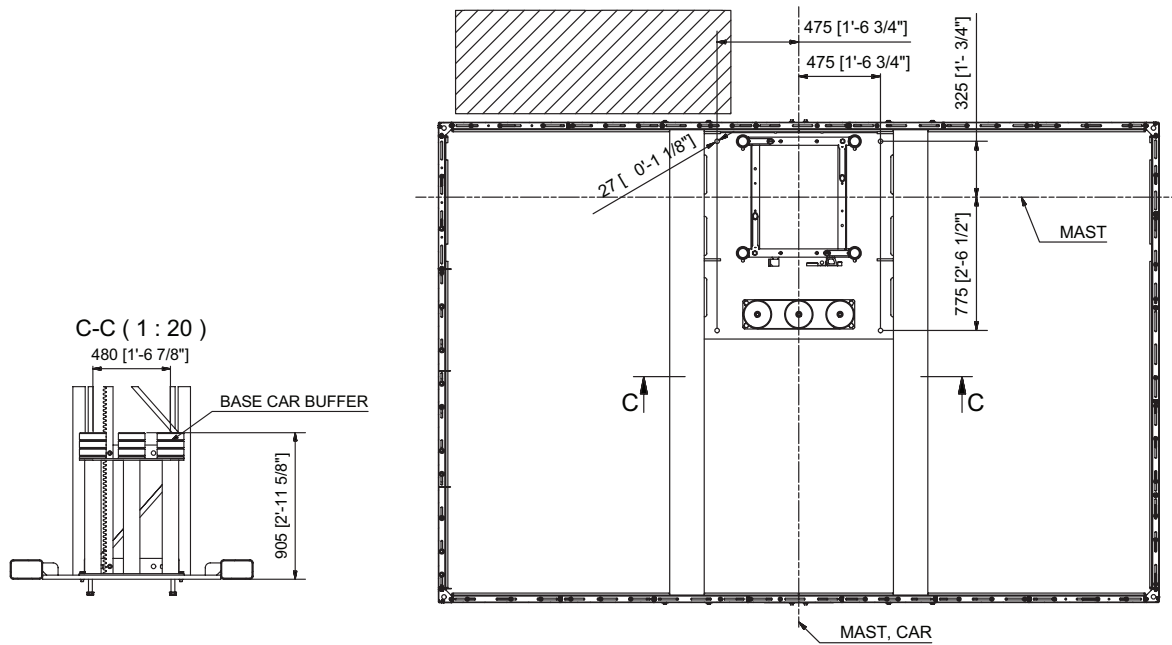


ELEVATION VIEW

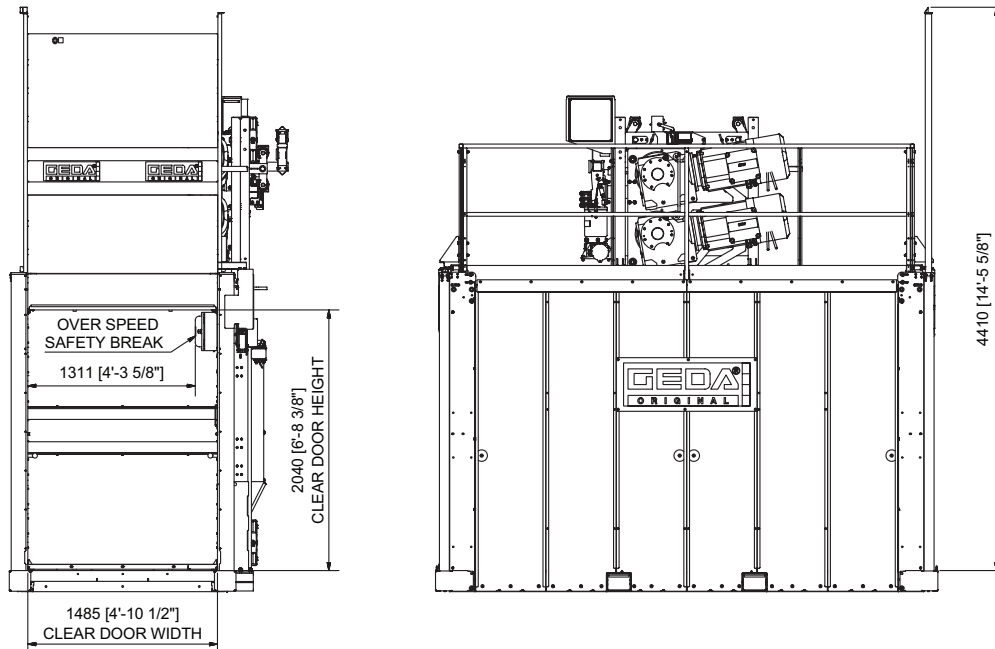
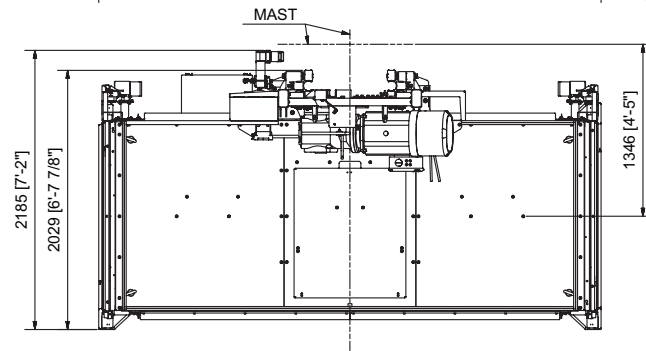
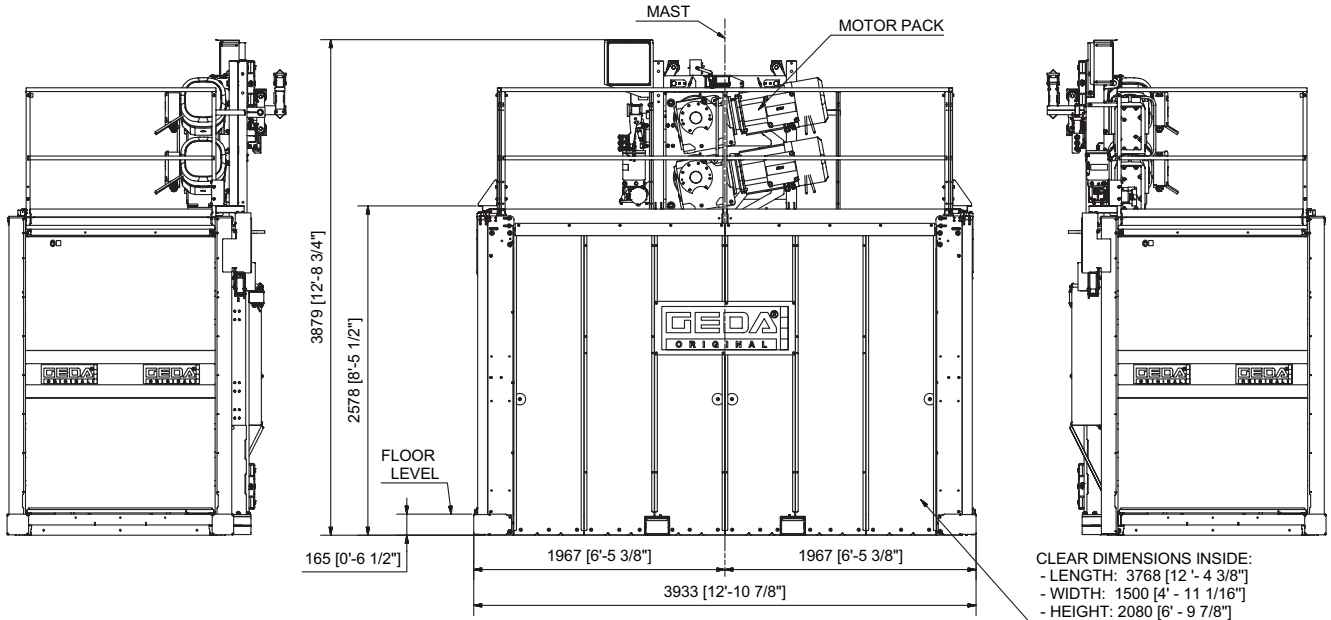
PLAN VIEW



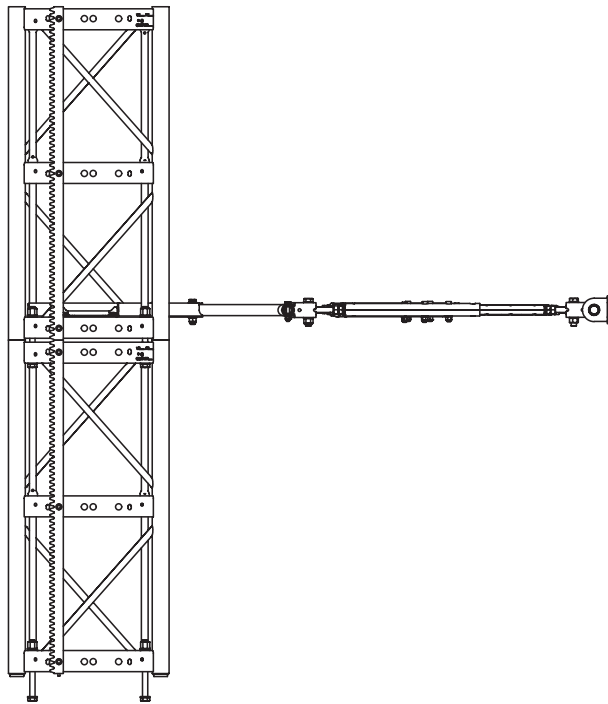
FOUNDATION PLAN VIEW



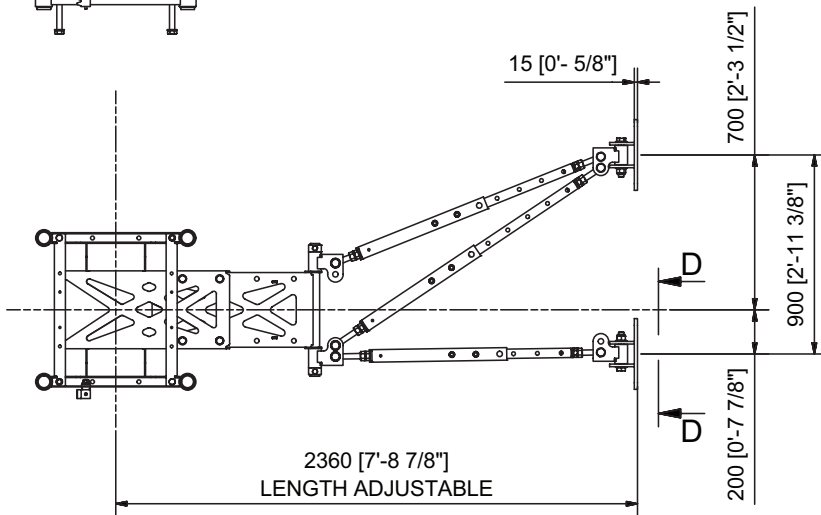
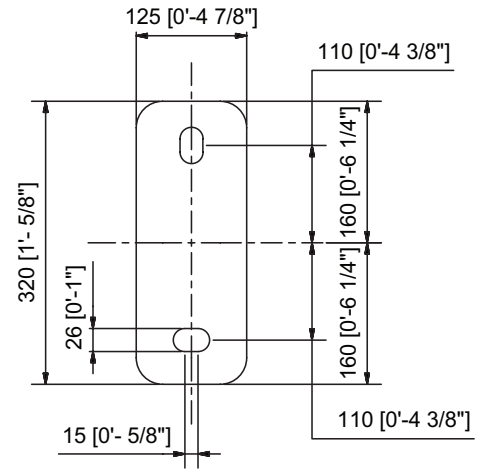
DETAIL CAR



DETAIL MAST TIE



TIE IN PLATE



SPECIFICATIONS

SAFETY AND TECHNICAL FEATURES

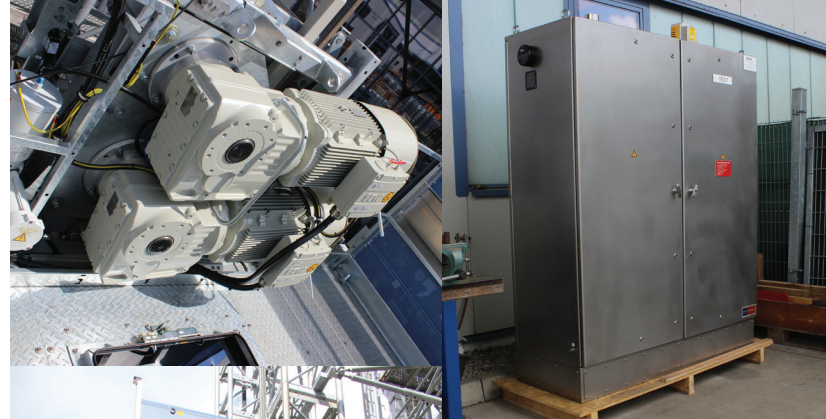
OVER SPEED SAFETY DEVICE
OVERLOAD DETECTION SYSTEM
PURGED ELECTRICAL PANEL BOX
TERMINAL LIMIT SWITCHES
FINAL TERMINAL LIMIT SWITCHES
CAR DOOR INTERLOCKS
LANDING DOOR INTERLOCKS
CAR LIGHTING
ALARM RELAY
AUTOMATIC LUBRICATION SYSTEM FOR THE GEAR RACK

CERTIFIED CODE COMPLIANCE

ELEVATOR STANDARD	ANSI A10.4
ELECTRICAL COMPONENTS	NEC500
ELECTRICAL WIRING OF CABINETS	UL508A
HAZARDOUS AREA CLASSIFICATION	CLASS 1, DIVISION 2, GROUP C & D
TEMPERATURE CLASSIFICATION	T3

CORROSION PROTECTION

LOAD BEARING STRUCTURAL COMPONENTS	HOT DIPPED GALVANIZED
ENCLOSURE PANELS	HOT DIPPED GALVANIZED & POWDER COATING (C4H)
ELECTRICAL CABINETS	NEMA 4X



SPECIFICATIONS

MACHINE TECHNICAL DATA SPECS

MACHINE TYPE:	GEDA PH6000 US XP
INTERIOR CAB:	4' 11" W x 12' 2" L x 6' 10" H
CAPACITY:	6000 LBS
LIFTING HEIGHT:	MAX 150m [492']
RATED SPEED:	196 ft/min
NUMBER OF MOTORS:	2 x 30HP
DRIVE UNIT:	VFD

COMPONENT WEIGHTS

BASE ENCLOSURE:	3100 LBS
CAR:	4100 LBS
MOTORPACK:	2500 LBS
ROOF CABINET:	575 LBS
MAST SECTION SINGLE:	343 LBS
MAST TIE:	230 LBS
CABLE GUIDE:	12.5 LBS
CABLE TROLLEY:	165 LBS

POWER SUPPLY REQUIREMENTS (PER CAR)

VOLTAGE:	480 V, 3 PHASE	FREQUENCY:	60 HZ
MAINS FUSES:	100 AMP	POWER CONSUMPTION	60 KVA



Machinery Directive 2006/42/EG
DIN EN ISO 9001:2008

